

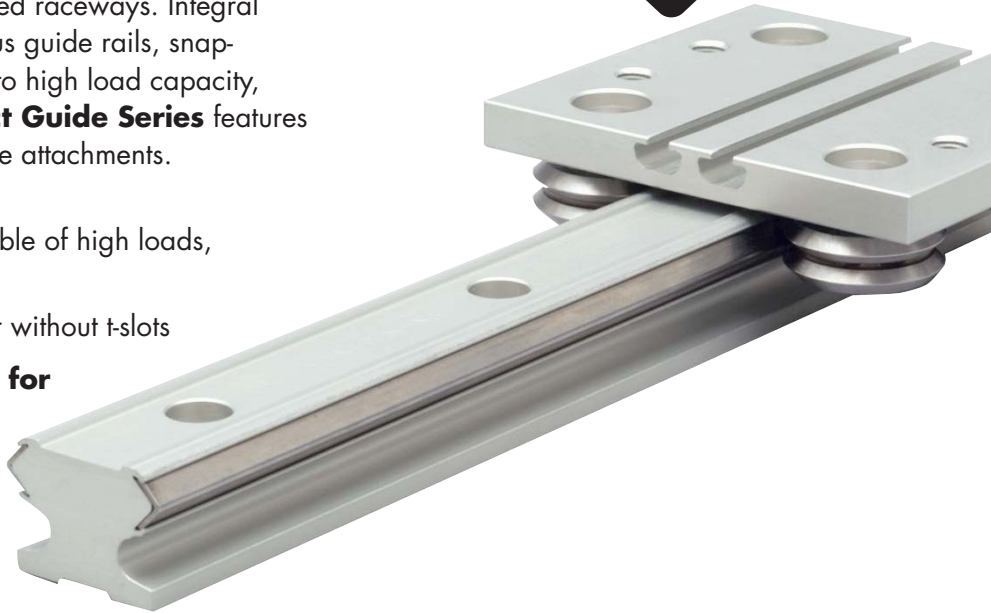
Integral V

COMPACT GUIDES

NEW

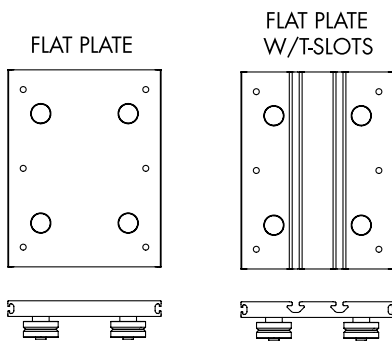
The Integral V™ system was developed to reduce costs, increase application flexibility and ease of installation. The rail consists of durable anodized aluminum framing and carbon steel angled raceways. Integral V components consist of various guide rails, snap-in clamps and carriages; each lending itself to high load capacity, rigidity and torque resistance. The **Compact Guide Series** features a condensed rail with several PBC compatible attachments.

- **Low friction rolling elements** – capable of high loads, velocity, and acceleration
- **Two carriage styles** – flat plate with or without t-slots
- **Optional lube pad or wheel covers for maintenance free options**
- **Max speed of 10m/s**
- **Nothing bolted or snapped on: all one unit**

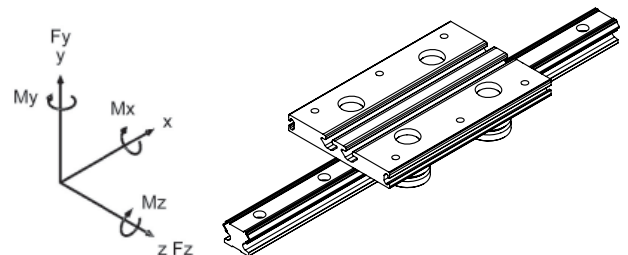


CARRIAGE STYLES

Custom carriages available upon request.



IVTAAWR

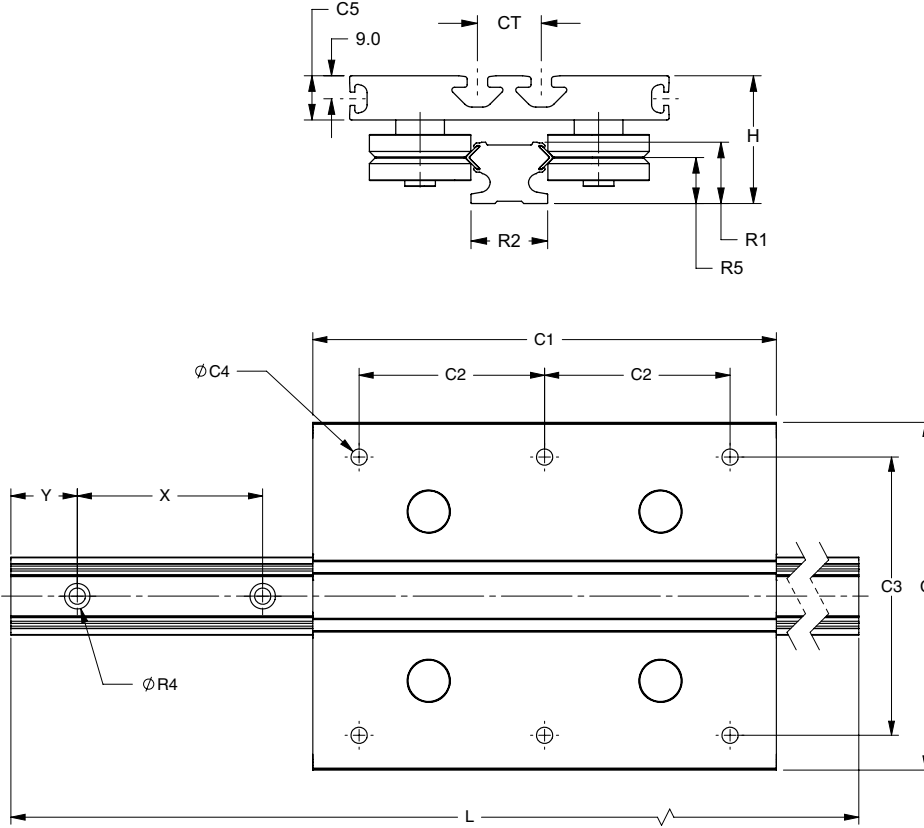


Part #	CARRIAGE LOAD RATING									
	Radial		Axial		Moment					
	Fz	Fz	Fz	Fy	Roll Mx	Pitch Mz	Yaw My			
(N)	(lbf)	(N)	(lbf)	(N-m)	(lbf-ft)	(N-m)	(lbf-ft)	(N-m)	(lbf-ft)	
IVTAAWR	5,560	1,250	5,560	1,250	195	144	280	207	278	205

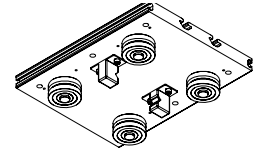
Load data shown in table is based on 100 kilometer travel.

DIMENSIONAL DATA

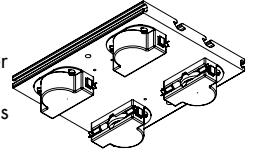
LUBRICATION OPTIONS



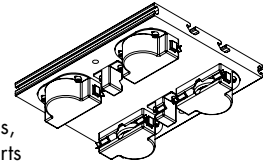
Lube Holder -
Micropoly® insert
lubricated raceway



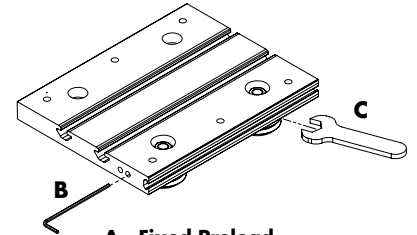
Wheel Cover -
Semi-enclosed cover
protects from
contaminated debris



**Wheel Cover &
Lube Holder -**
Semi-enclosed
cover protects from
contaminated debris,
plus Micropoly inserts



**PRELOAD
OPTIONS**



A - Fixed Preload

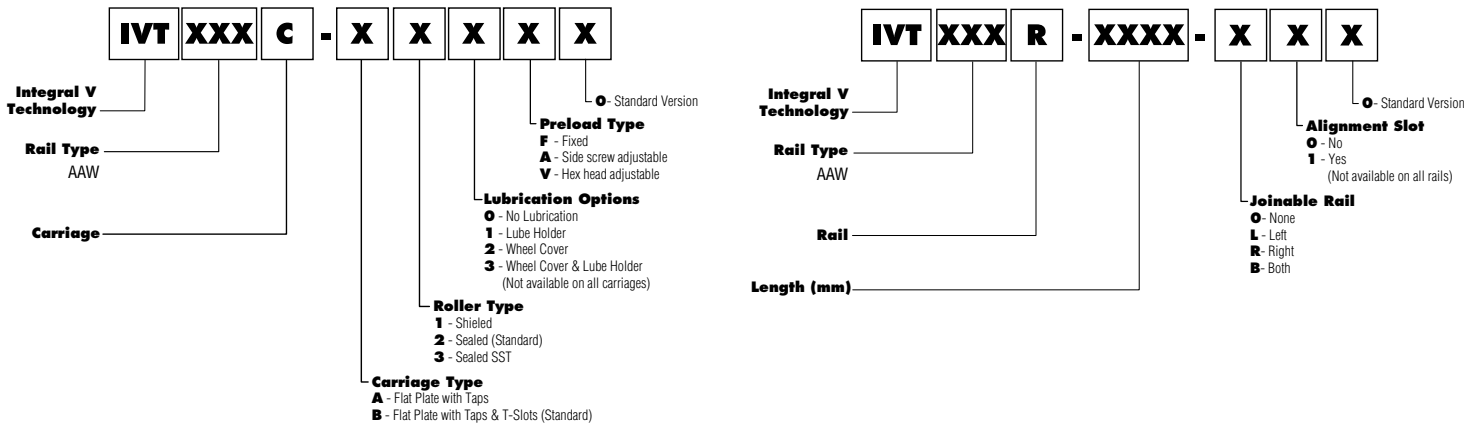
**B - Side Screw Adjustable
Preload** (Standard)

**C - Hex Head Adjustable
Preload**

Part #	H	R	R1	R2	R4 Bolt size	R5	X	Y	C	C1	C2	C3	CT	C4 TAP	C5	L Max
IVTAAW	50	35	24	30	M6 SHCS	18	80	40	125	200	80	100	25	M8 X 1.0	17.3	4000

All dimensions in millimeters.

ORDERING INFORMATION



Product information and 2D/3D CAD drawings available for download at www.pbclinear.com
For technical & application information call **1-888-777-1466**

The data and specifications in this publication have been carefully compiled and are believed to be accurate and correct. However, it is the responsibility of the user to determine and ensure the suitability of PBC Linear™ products for a specific application. PBC Linear™ only obligation will be to repair or replace without charge, any defective components if returned promptly. No liability is assumed beyond such replacement. Specifications are subject to change without notice. 6/27/08